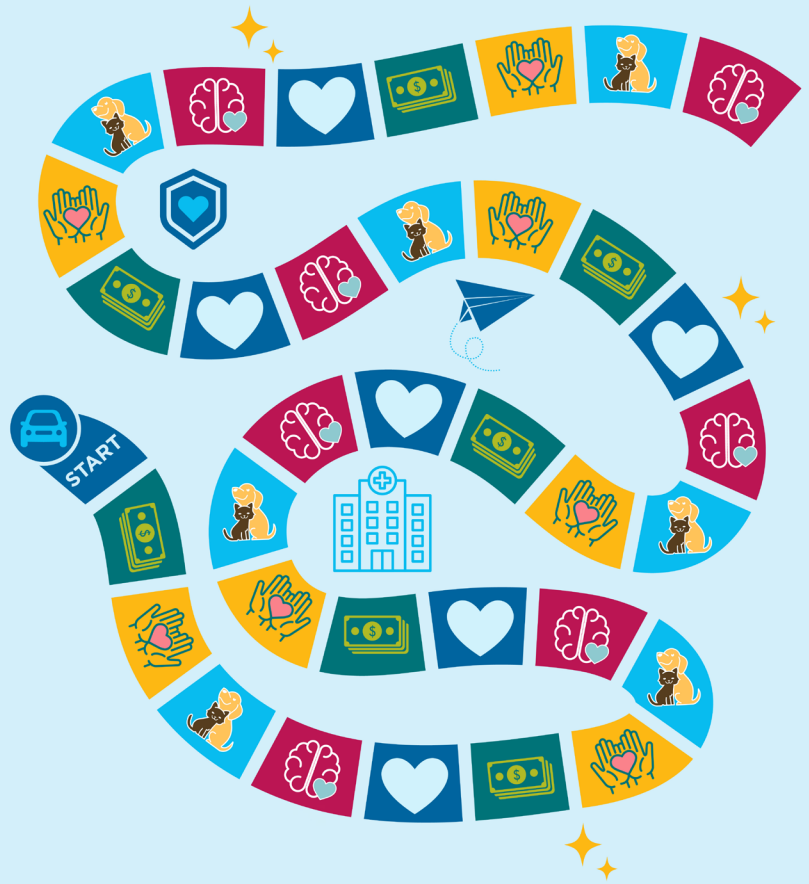


CARE ON CALL

For Lifetime Support



- FINANCIAL/LEGAL SUPPORT
- CAREGIVER/CHILD CARE SUPPORT
- PET CARE SUPPORT
- MENTAL HEALTH SUPPORT
- WELL-BEING SUPPORT

FINANCIAL AND LEGAL SUPPORT

[Financial Services](#)
[SoFi at Work](#)
[Corebridge](#)
[PL Emergency Hardship Withdrawal Instructions](#)
[Kashable/BMG Personal Loans](#)
[PerkSpot Employee Discounts](#)
[Advantage Home Ownership](#)

Credit Unions

[Dade County Federal Credit Union](#)
[Tropical Financial Credit Union](#)

CAREGIVER/CHILD CARE SUPPORT

[Elder Care Support](#)
[Child Care Support](#)

PET CARE SUPPORT

[Pet Services](#)
[Pet HMO Wishbone](#)
[Pet Discount Program](#)

MENTAL HEALTH SUPPORT

[Mental Well-Being Services](#)
[Tava Health](#)
[Aetna Behavioral Health](#)

WELL-BEING SUPPORT

Workplace Well-Being

[Headspace](#)
Wellness Wednesdays – Reach out to
HR-Benefits@jhsMiami.org for more information.
[Zen Dens](#)
[Kula for Karma Virtual Meditations](#)
[Thoughtful Thursdays](#)
[Workplace Violence Committee](#)

Support Anytime

[Life Transitions Support](#) (new parent, grief, divorce, relocation, etc.)
[Arag Legal](#) - **Use access code: 17845jhs**
[Relationships](#)
[Social and Community Resources](#)

Jackson
HEALTH SYSTEM

Miracles made daily.